



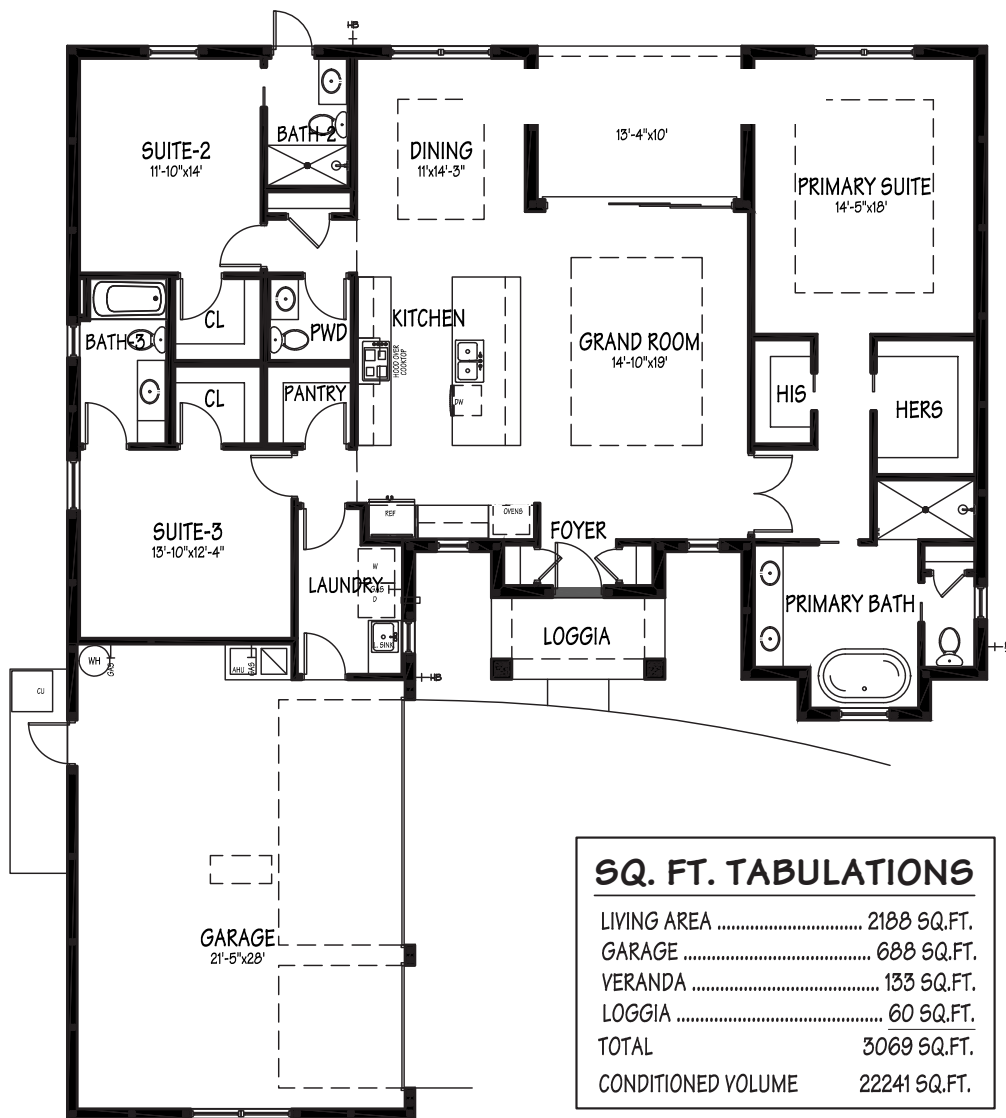
LAGUNA VILLAGE

CARMEL

[DiPrima.com](http://DiPrima.com)

1199 S Patrick Dr | Satellite Beach, FL 32937

Phone 321.777.2500



BASE FLOOR PLAN



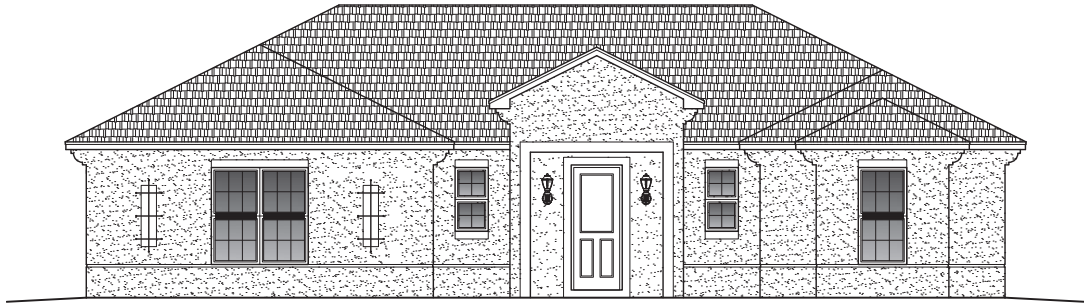
**“CARMEL”**  
2,188 Living Square Ft.

## LUXURY RESIDENCES WITH A CALIFORNIA FLAIR

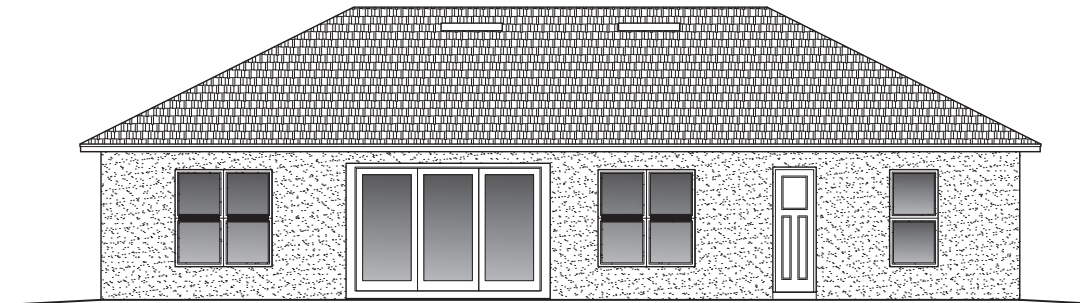
DiPrima Custom Homes features the new Trademark Collection, inspired by the city of Santa Barbara and designed with a California flair. Each model is offered with the Santa Barbara elevation or the Coastal elevation.

This model includes a base floor plan with multiple alternative selections.

# CARMEL



FRONT ELEVATION



REAR ELEVATION

## TRADEMARK COLLECTION FEATURES

Stainless Steel Appliances

Granite Countertops

Designer Floor Tile

Stain Resistant Carpet

Spacious Laundry Room

Alternate Elevations

Designer Brick Pavers

Landscape Package

Energy Conserving Windows

Designer Light Package

Since 1961, DiPrima Custom Homes has been first when it comes to purchasing a luxurious home at an affordable price. When you choose DiPrima as your home builders in Brevard County, Florida, first rate is what you will get.

We can help make your dream home a reality.

321.777.2500 | [DiPrima.com](http://DiPrima.com)





We are pledged to the letter and spirit of U.S. policy for the achievement of equal housing opportunity throughout the Nation.  
We encourage and support an affirmative advertising and marketing program in which there are no barriers to obtaining  
housing because of race, color, religion, sex, handicap, familial status, or national origin.



[DiPrima.com](http://DiPrima.com)

1199 S Patrick Dr | Satellite Beach, FL 32937

Phone 321.777.2500