



We are pledged to the letter and spirit of U.S. policy for the achievement of equal housing opportunity throughout the Nation. We encourage and support an affirmative advertising and marketing program in which there are no barriers to obtaining housing because of race, color, religion, sex, handicap, familial status, or national origin.



DiPrima.com
1199 S Patrick Dr | Satellite Beach, FL 32937
Phone 321.777.2500



SANTA BARBARA ELEVATION



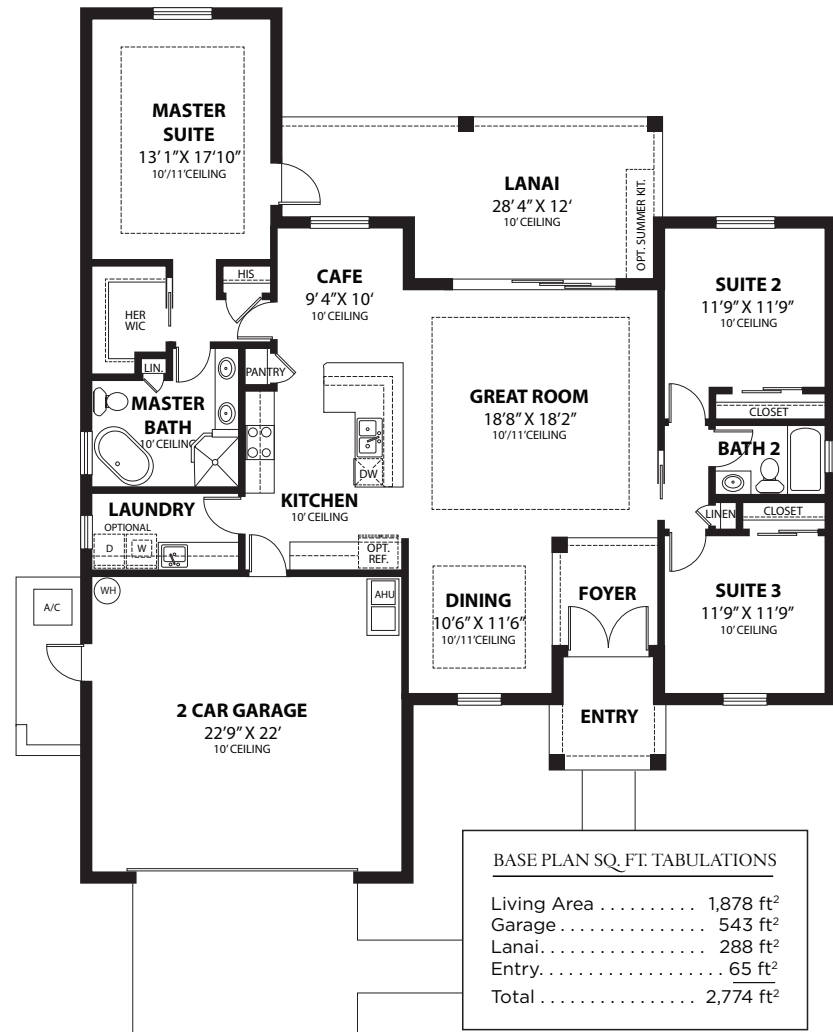
COSTAL ELEVATION



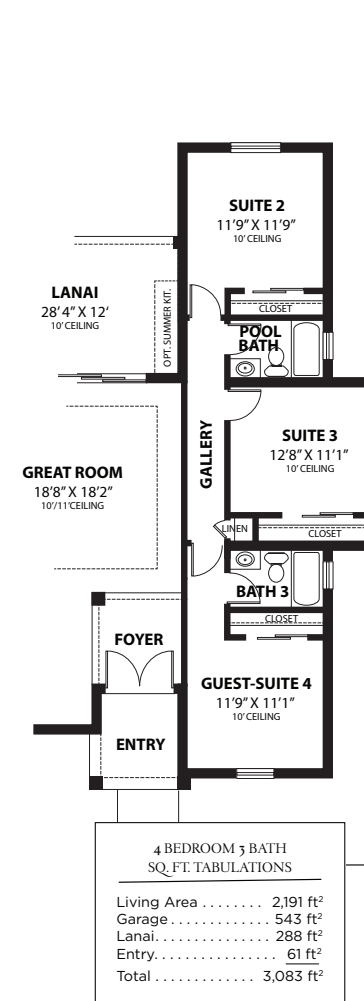
LAGUNA VILLAGE

AVALON

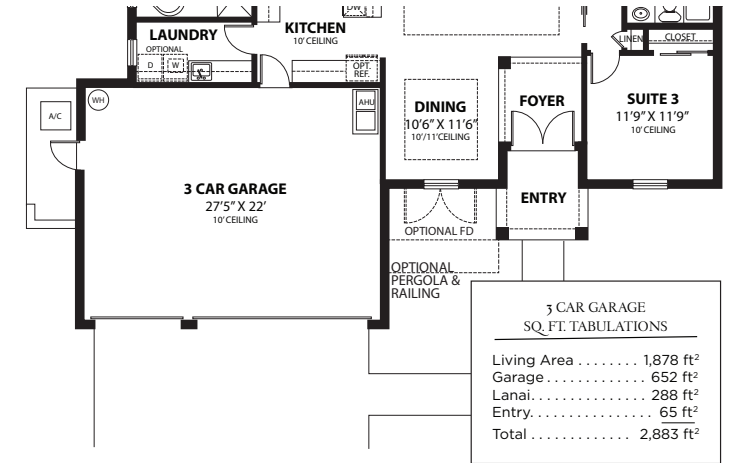
DiPrima.com
1199 S Patrick Dr | Satellite Beach, FL 32937
Phone 321.777.2500



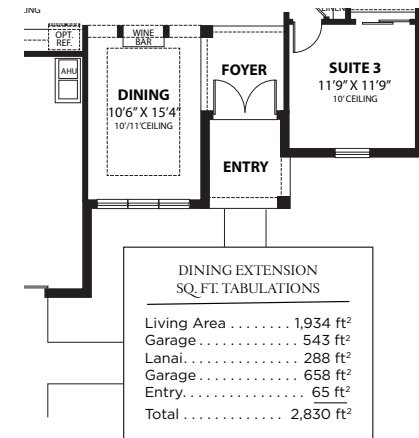
BASE FLOOR PLAN



4 BEDROOM 3 BATH OPTION



3 CAR GARAGE OPTION



DINING EXTENSION OPTION



“THE AVALON”

1,878-2,191 Living Square Ft.

LUXURY RESIDENCES WITH A CALIFORNIA FLAIR

DiPrima Custom Homes features the new Trademark Collection, inspired by the city of Santa Barbara and designed with a California flair. Each model is offered with the Santa Barbara elevation or the Coastal elevation.

Both options include a base floor plan with multiple alternative selections.

TRADEMARK COLLECTION FEATURES

Stainless Steel Appliances
Granite Countertops
Designer Floor Tile
Stain Resistant Carpet
Spacious Laundry Room

Upgraded Elevations
Designer Brick Pavers
Landscape Package
Energy Conserving Windows
Designer Light Package

Since 1961, DiPrima Custom Homes has been first when it comes to purchasing a luxurious home at an affordable price. When you choose DiPrima as your home builders in Brevard County, Florida, first rate is what you will get.

We can help make your dream home a reality.

Monday - Saturday 10AM - 5PM
Sunday 12PM - 5PM

321.777.2500 | DiPrima.com